

REYNOLDS GALLERY

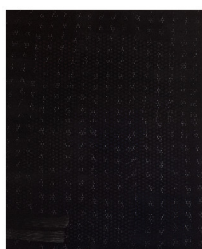
Alison Hall
for the white bird
September 6 - November 1, 2019

1



Alison Hall
Faraway Eyes (for the sleepless), 2019
Oil, graphite, and plaster on panel
40 x 32.5 inches

2



Alison Hall
Totem (for the wavering), 2019
Oil, graphite, and plaster on panel
40 x 32.5 inches

3



Alison Hall
Threshold (for glimpses of the white bird), 2019
Oil, graphite, and plaster on panel
40 x 32.5 inches

4



Alison Hall
Temple (for the undecided),
2019
Oil, graphite, and plaster on panel
40 x 32.5 inches

5

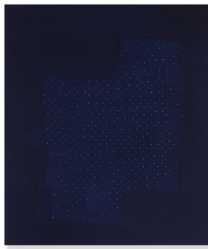


Alison Hall

Faraway Eyes (for the birdwatcher), 2019

Oil, graphite, and plaster on panel
40 x 32.5 inches

6



Alison Hall

Scenes from the Life of MM, II,
2019

Oil, graphite, and plaster on panel
13 x 11 inches

7

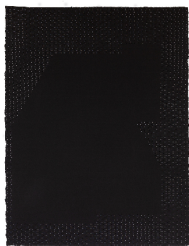


Alison Hall

Scenes from the Life of MM, IV,
2019

Oil, graphite, and plaster on panel
13 x 11 inches

8

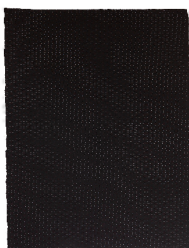


Alison Hall

Water Witch I, 2019

Graphite and gouache on paper
30 x 23 inches

9

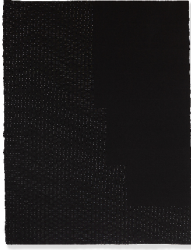


Alison Hall

Water Witch II, 2019

Graphite and gouache on paper
30 x 23 inches

10



Alison Hall

Water Witch III, 2019

Graphite and gouache on paper

30 x 23 inches

11



Alison Hall

Scenes from the Life of MM, III,
2019

Oil, graphite, and plaster on panel

13 x 11 inches

12



Alison Hall

*Pavimento di Padua, Capella
Scrovegni*, 2012/2013

Plaster on hand-cut birch

103 x 78 inches